



*Colour by*  
**SHEERLINE**<sup>®</sup>  
ALUMINIUM WINDOWS AND DOORS

Beautiful, consistent colour powered by  
our **NEW** in-house Powder Coating Plant



# Introducing our own Powder Coating Plant

We have invested over £1 million in a new state-of-the-art powder coating plant at our Firs Works site in Derbyshire. Bringing the most important secondary process that happens to our Sheerline aluminium range after it has been extruded, in-house for the first time.

Previously, we have relied on third party suppliers to powder coat our products. Transporting our mill finished profiles from our warehouse to the powder coaters, for them to process, before we collect back, then put into stock. This process racks up mileage, increases the

products carbon footprint, and unavoidably introduces extra incremental opportunities for damage to occur. Now by installing our own Powder Coating operation we have solved many of these issues.

This further investment in truly vertically integrated UK manufacturing is vital to our ability to offer you, our Sheerline customers the very best service and quality possible.



Greg Grabski:  
Our Powder Coating  
Production Manager

## The benefits of in-house painting

By investing in our own powder coating facility, built in-line with our Hybrex aluminium press we have reduced many common paint quality issues and have built in efficiencies and significantly reduced stock movement. Taking up to 5 weeks out of the process of putting painted profiles into stock.

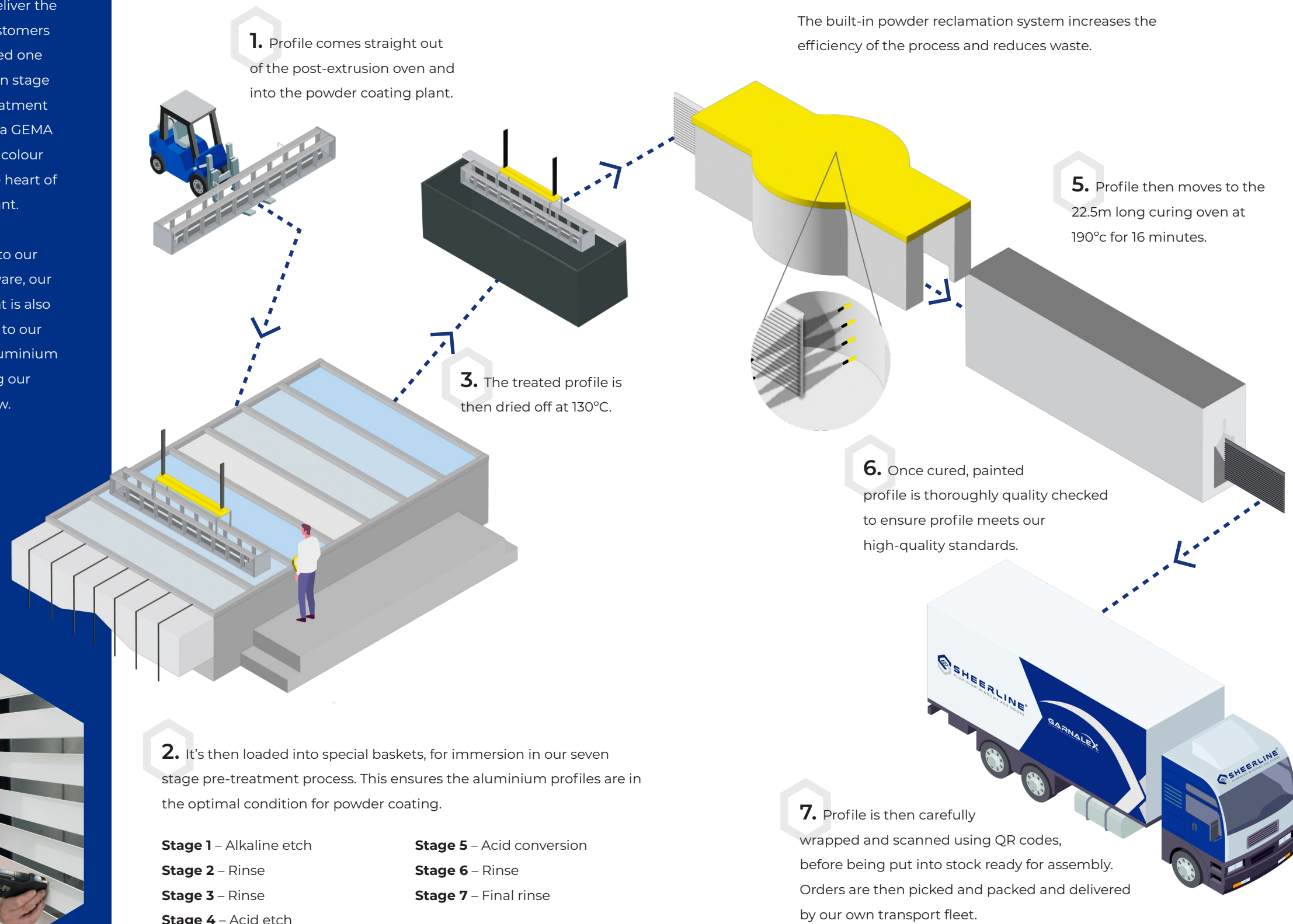
This added agility will ensure we are able to fulfil orders on time and in full, as well as giving us direct control over quality checks, and the ability to rectify any issues in hours rather than weeks - ensuring Sheerline's powder coating is best-in-class.



# The Process

Putting the right machinery and infrastructure in place is key to ensuring we deliver the Sheerline quality customers value. We've installed one of the very best seven stage chrome free pre-treatment systems and chosen a GEMA Magic Cylinder fast colour change system at the heart of our painting plant.

Fully integrated into our own GarnerSys software, our powder coating plant is also physically adjacent to our incredibly efficient aluminium press – optimising our production flow.



100% Control

From Log



To Press



To Powder Plant



To Final Product







## Exceptional Quality Standards

Bringing our painting in-house means we can guarantee that the high Sheerline quality standards are adhered to throughout our controlled, in-house processes.



## Sustainability

With Sheerline profile now travelling less, we are minimising and reducing its carbon footprint and operating as sustainably as possible.



## Reducing Risks

Now all product is manufactured, painted, rolled and securely wrapped on one site, with minimal movement, we are lowering the risk of damage.



## Improved Sheerline Service

Our complete onsite facility enables us to offer a more robust delivery promise to our customers.



# Sheerline products are available in the following colours



## OUR TRADITIONAL COLOURS

**Pure White**  
 9010  
 Matt

**Hipca Gloss White**  
 9910 Gloss

**Anthracite Grey**  
 7016  
 Matt

**Jet Black**  
 9005  
 Matt

## THE CHARACTER RANGE OF PREMIUM COLOURS

**Cream**  
 9001  
 Matt

**Agate Grey**  
 7038  
 Matt

**Squirrel Grey**  
 7000  
 Matt

**Pastel Turquoise**  
 6034  
 Matt

**Chocolate Brown**  
 8017  
 Matt

## THE PARGON ANODISED EFFECT RANGE

**Natural Silver**  
 Anodised effect

**Mid Bronze**  
 Anodised effect

**Black**  
 Anodised effect



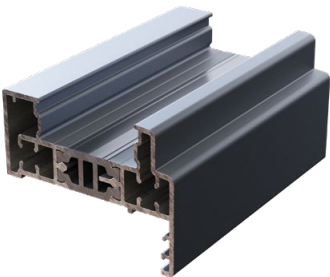
# Bespoke Colour Service

Alongside our Traditional, Character and Anodised effect colour ranges, we've also seen growing demand for bespoke colours, driven by homeowners wanting to match everything from the colour of their kitchen cabinets or local stone, to an architect's vision. Luckily for Sheerline customers, our on-site facilities let us turn round bespoke colour jobs in an average of just 15 days!

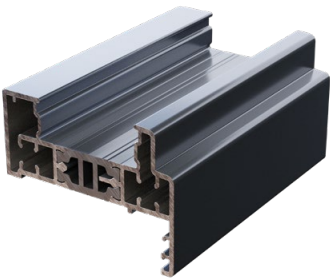
## Finish options

When ordering bespoke colours, we can provide any RAL colour in a variety of finish options including matt, satin, or gloss. In addition, we can also offer fine textured and special finish options\* on request, which are often popular on architect-lead design projects. Contact us for more information.

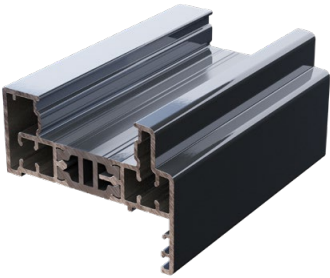
As our bespoke service is so efficient and only adds on average a week to orders, you can easily keep up with colour trends and deliver your customer's vision.



Matt



Satin



Gloss

*\*Fine texture and special finish options may impact price, lead times and guarantees.*



# Additional Options

\*Available from mid-September



## Colour Swatches

Showcasing hundreds of colour options to choose from.



## Bespoke Colour Plaques

Available for colour critical applications.

## Colour Selector App

To make it quick and easy to explore the hundreds of bespoke colour options available, or if your customer wants to match a specific colour AkzoNobels' quick and easy to use app\* puts everything at your fingertips.

Scan the QR code to download and find the perfect colour combination.



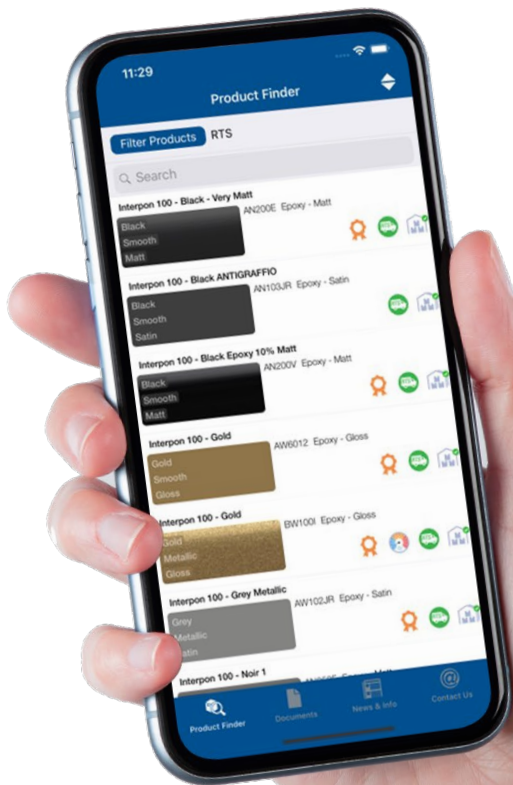
## Showroom Colour Boards

Displays the full standard Sheerline colour range.



## Spray Cans

Available for touching up marks caused during fabrication or resolving on-site damage.



\*Only available for Apple iOS devices





sheerline.com